


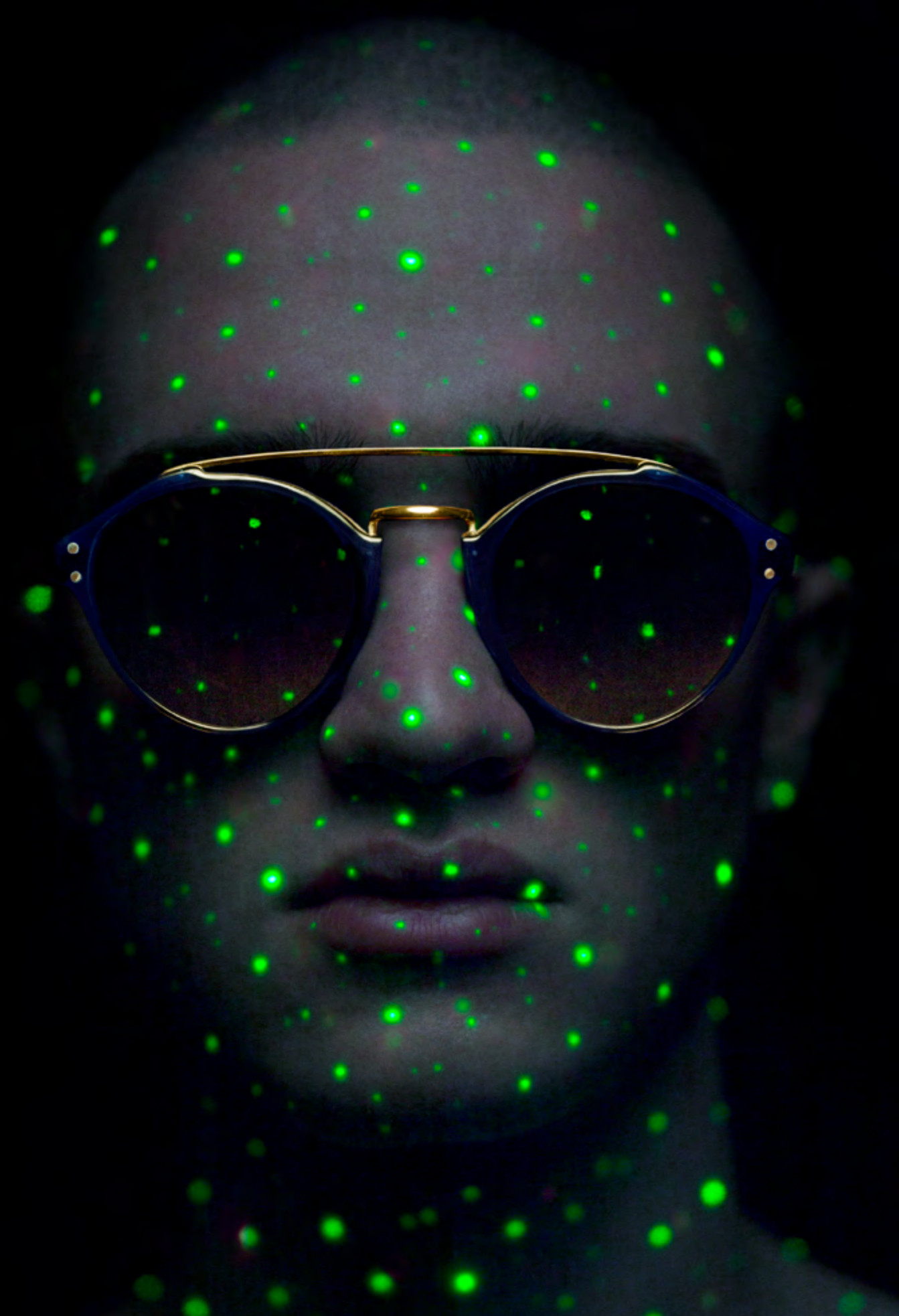
CUTLER AND GROSS

SPRING / SUMMER 2017

The background is a dark, almost black, space filled with several sharp, diagonal streaks of light. The most prominent streak is a bright blue line that runs from the bottom left towards the top right. Other streaks in various shades of blue and green are scattered across the frame, some appearing as thin, sharp lines and others as slightly thicker, glowing bands. The overall effect is one of dynamic energy and tension.

Inspired by the tension between the fast pace of technology and the natural world, the new collection from the iconic British eyewear brand Cutler and Gross is underpinned by a bold, provocative campaign shot by globally-renowned portrait photographer Platon.

1249



LIMITED EDITION

47□25-145

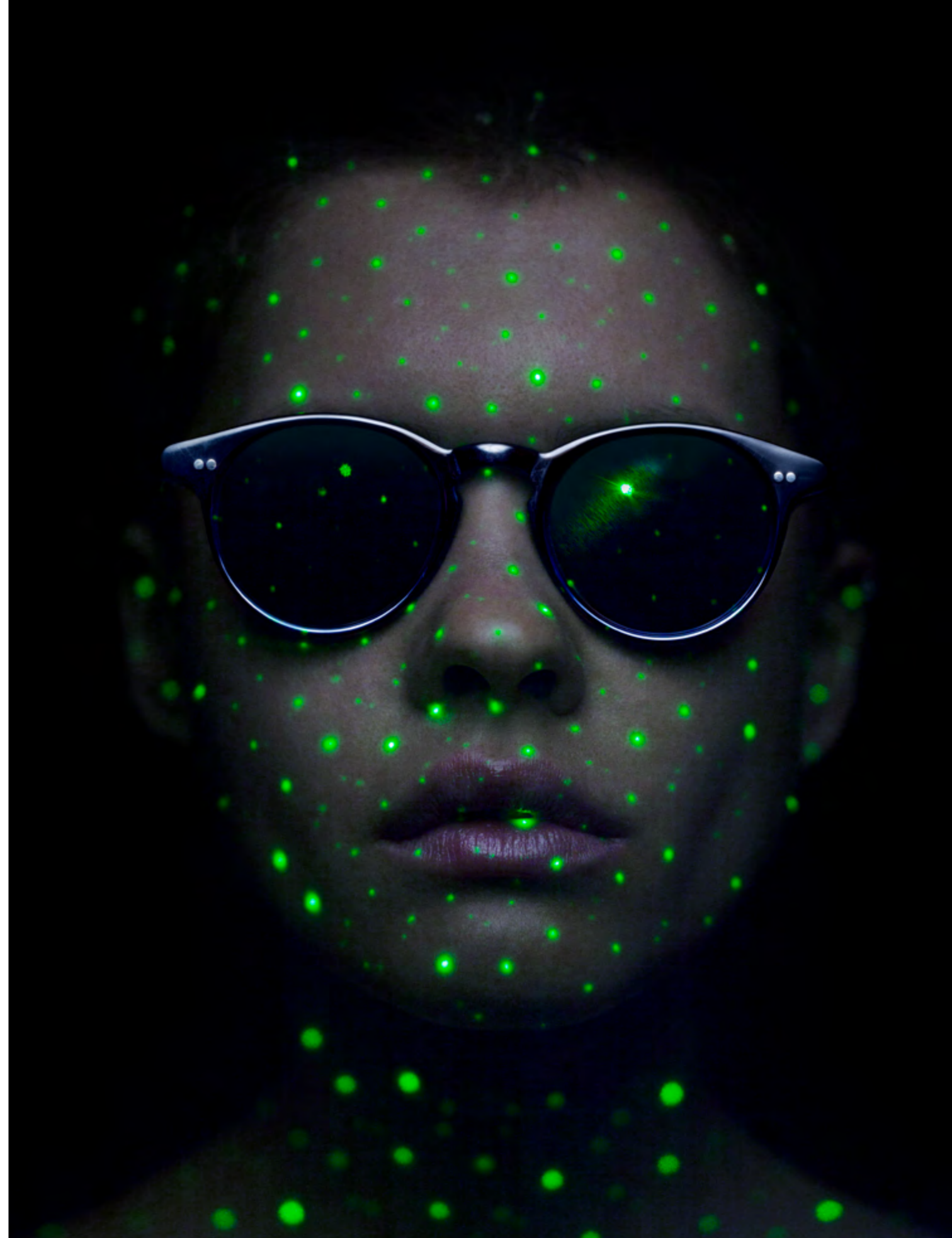
BLACK - CLASSIC NAVY BLUE LTD - GROUND CLOVES

0710/S2



45□20-145

BLACK - GROUND CLOVES - SWAMP





0822/S2

1246



53□17-145

DARK TURTLE 01 - MATT BLACK

48□21-145

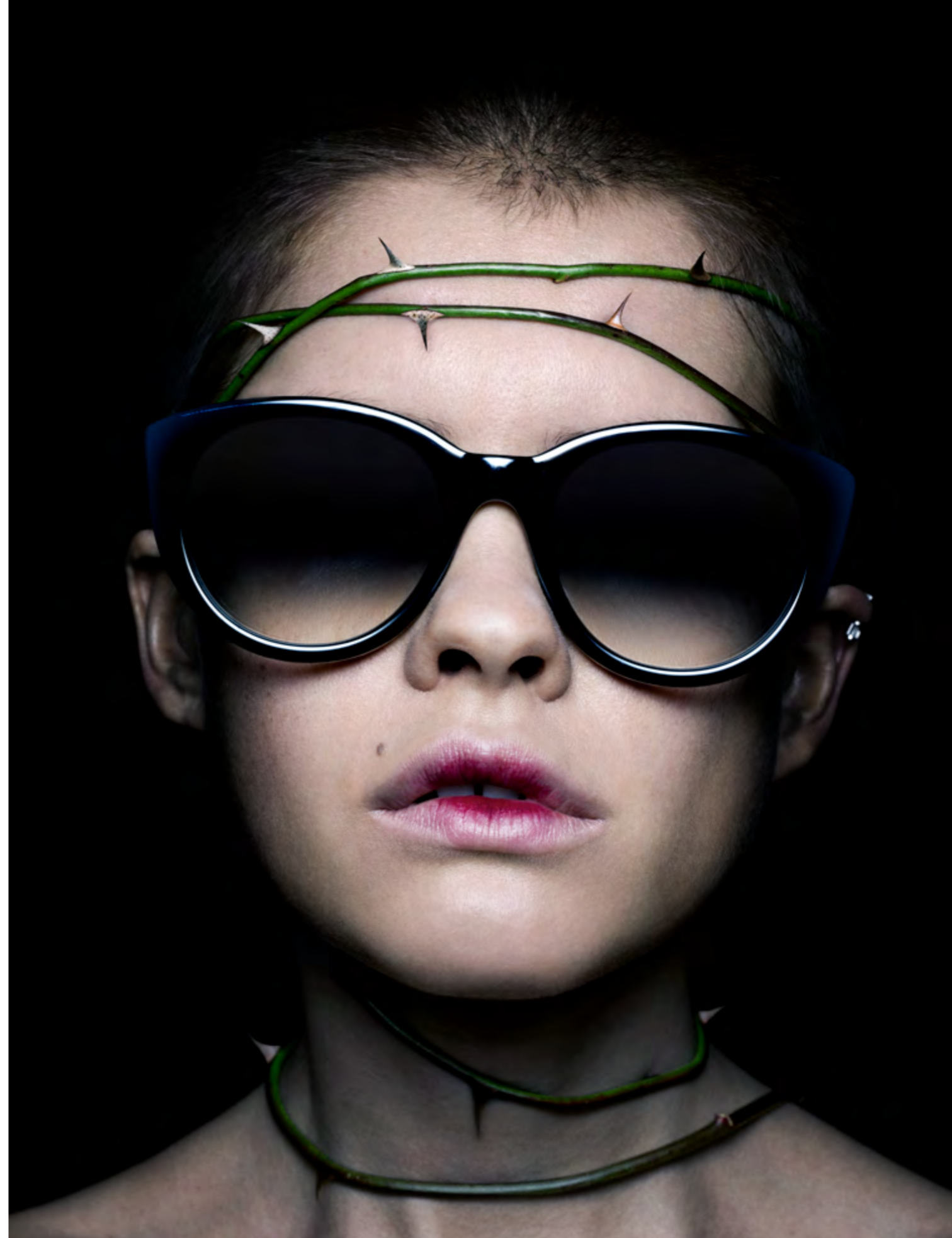
BLACK ON CRYSTAL - DARK TURTLE 01 - SILVER ILLUSION

0259/2



55□22-145

BLACK - CLASSIC NAVY BLUE - DARK TURTLE 01



1137/2



49□19-140

BLACK - DARK TURTLE 01 - STORM BLUE

0734/2



47□23-145

BLACK - DARK TURTLE 01 - HUMBLE POTATO



1239



48□21-14 5

AMBER TURTLE - BLACK - DARK TURTLE 04

1242



47□21-14 5

BLACK - GROUND CLOVES - OLIVE

1241



52□16-145

BLACK - DARK TURTLE 01 - RUSSIAN BLUE

1168/2



53□19-145

AVIATOR BLUE - BLACK - DARK TURTLE 01



0822/2



53□17-145
BLACK - DARK TURTLE 01

0710/2



45□20-145
BLACK - GROUND CLOVES - SWAMP

1243



47□25-145

BLACK - CLASSIC NAVY BLUE - DARK TURTLE 01





CONTACT US

General Enquiries
+44 (0) 208 451 0331
askme@cutlerandgross.com

Press Office
+44 (0) 208 451 0331
pr@cutlerandgross.com

Sales
+44 (0) 208 451 0331
sales@cutlerandgross.com