



UNNATURAL SELECTION

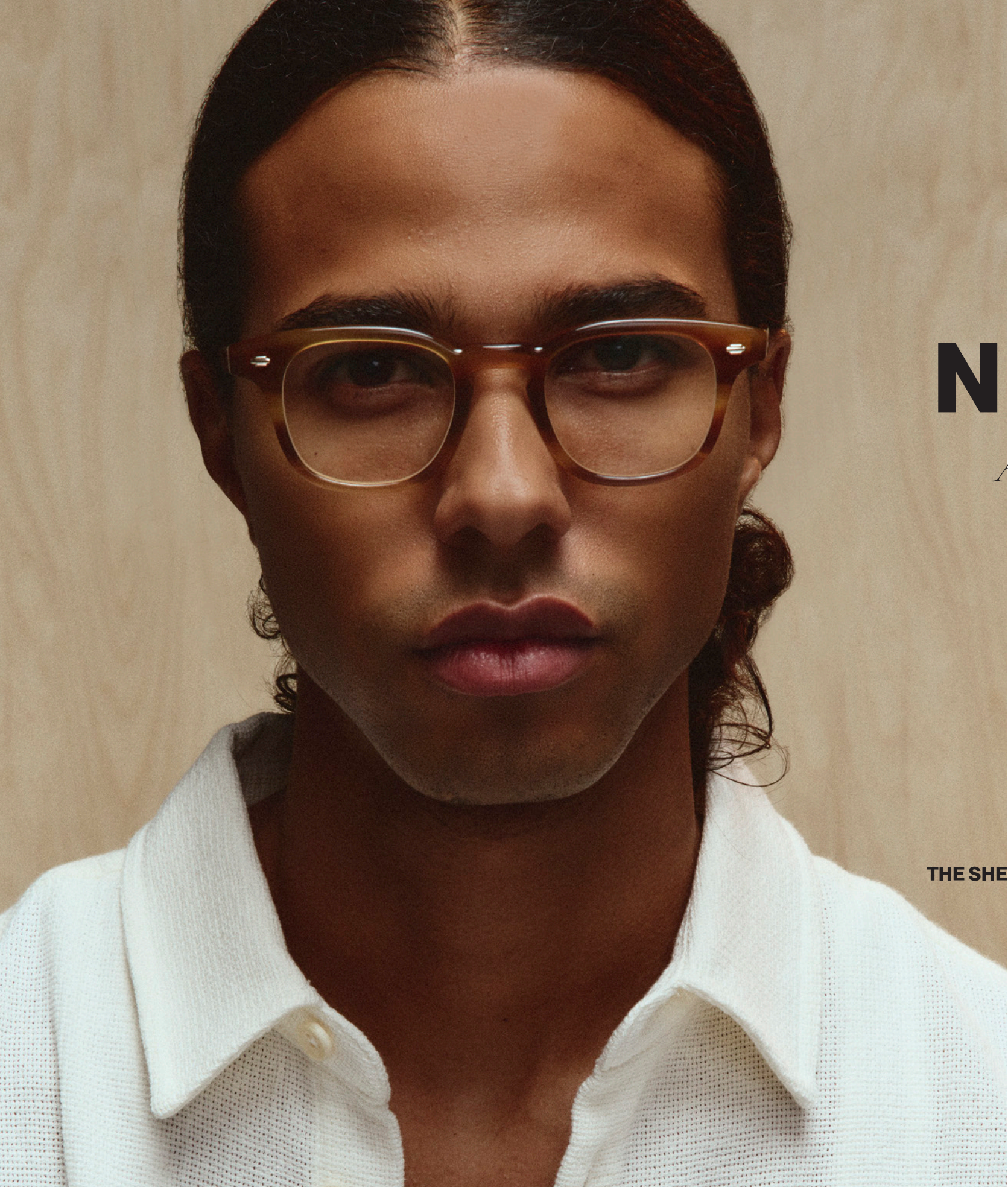
Los Angeles California



GARRETT LEIGHT CALIFORNIA OPTICAL
SPRING SUMMER 2024

GARRETLEIGHT.COM
@GARRETLEIGHT

SS 24 COLLECTION



NEW OPTICAL

*Alder¹⁵ Manzanita¹⁷ Monarch¹⁹
Sherwood¹¹ Wilshire¹³*

THE SHERWOOD / In True Demi



ALDER



A larger frame for a refined, scholarly look. The Alder features a custom Palm print filagree core wire, UFO plaques on the temple, and dual-plated real rivet hinges with external pins.



BLACK
1150-50-BK



BREW
1150-50-BRE



DOUGLAS FIR
1150-50-DGFR



MATTE ESPRESSO
1150-50-MESP



THE MANZANITA / In Spotted Brown Shell

MANZANITA



A classic P3 with an uplifted endpiece for a soft, easy wear. Featuring a custom Braid filigree core wire, 5-barrel hinge and a keyhole nose bridge.



CHERRY FADE
1151-50-CHF



CYPRUS FADE
1151-48-CYPF



PALISADE TORTOISE
1151-48-PAT



PROSECCO
1151-48-PRO



REDWOOD TORTOISE
1151-50-RWT



SPOTTED BROWN SHELL
1151-48-SPBRNSH



THE MONARCH / In Black

MONARCH



Modern meets classic. This elegant, square cat eye frame features a saddle nose bridge, custom Braid filigree core wire and dual-plated real rivet hinges with external pins.



BLACK
1155-49-BK



CEDAR TORTOISE
1155-49-CEDT



DESERT ROSE
1155-49-DER



JASPER
1155-49-JA



THE SHERWOOD / In True Demi

SHERWOOD



The Sherwood is a compact, tailored square frame taking design notes from classic 50's eyewear. This frame features a thicker acetate, a custom Braid filigree core wire, and our custom Calabar plaque.



BLACK
1154-44-BK / 1154-47-BK



CLAY CRYSTAL
1154-44-CLCR / 1154-47-CLCR



DOUGLAS FIR
1154-44-DGFR / 1154-47-DGFR



MATTE REDWOOD TORTOISE
1154-44-MRWT / 1154-47-MRWT



TRUE DEMI
1154-44-TD / 1154-47-TD



WILSHIRE



The Wilshire is a sophisticated, soft square frame composed of a thin and light weight Cured Cellulose Acetate. Featuring a custom Braid filigree core wire, 5-barrel hinge and a keyhole nose bridge. If you're fan of our classic Kinney this is a nice addition to your eyewear collection.



HIMALAYAN SALT
1153-47-HIMSLT



MATTE BLACK
1153-47-MBK



REDWOOD TORTOISE
1153-47-RWT



WILLOW
1153-47-WIL



OPTICAL RECOLORS

*Chune*¹⁷ *Grant*¹⁹ *Kinney*²¹
*Morningside*²³ *Paloma*²⁵

THE MORNINGSIDE / In Spotted Brown Shell



THE CLUNE / In Sandstorm

CLUNE



Inspired by the mid-century, Clune is a modern take on the classic P3 silhouette, with a distinctive round shape and lightweight acetate construction.



CYPRUS FADE
1047-45-CYPF / 1047-47-CYPF



SANDSTORM
1047-45-SASTM / 1047-45-SASTM



THE GRANT / In Antique Gold-Redwood Tortoise

GRANT



An updated version of our previous bestseller, the Grant features a thin, enamel-painted, all-metal eyewire for enhanced comfort, performance, and fit. Simple filigree details add subtle interest to this minimal, square frame.



ANTIQUE GOLD-REDWOOD TORTOISE
3009-49-ATG-RWT



GOLD-SIERRA TORTOISE
3009-49-G-SRAT



PEWTER-WILLOW
3009-49-PW-WIL



THE KINNEY / In Douglas Fir

KINNEY



One of our forever classics, *Kinney* boasts a simple yet classic silhouette that's designed to suit everyone. Featuring a semi-square shape with balanced proportions and a keyhole bridge.



DOUGLAS FIR
1007-47-DGFR / 1007-49-DGFR



PALISADE TORTOISE
1007-47-PAT / 1007-49-PAT



REDWOOD TORTOISE
1007-47-RWT / 1007-49-RWT



SANDSTORM
1007-47-SASTM / 1007-49-SASTM



THE MORNINGSIDE / In Black

MORNINGSIDE



The Morningside is an oversized round style inspired by Lauren Hutton's iconic look in *American Gigolo*. The chic, ultra-thin acetate frames come in a range of versatile colorways.



BLACK
1076-51-BK



SANDSTORM
1076-51-SASTM



SPOTTED BROWN SHELL
1076-51-SPBRNSH



THE PALOMA / In Antique Spotted Brown Shell-Gold

PALOMA



A round, lightweight, classic P3 metal frame with interior Windsor rims and a curved, polished bridge.



BLACK-SILVER
3011-48-BK-SV



SPOTTED BROWN SHELL-GOLD
3011-48-SPBRNSH-G



WILLOW-ANTIQUE GOLD-HOPPS
3011-48-HPTO-ATG-WIL



NEW SUN

Cyprus^{/29} *Gilbert*^{/31} *Manzanita*^{/33}
Meadow^{/35} *Sherwood*^{/37} *Sherwood Clip*^{/39}
Torrey^{/43} *Van Buren II*^{/45}

THE CYPRUS / In Cherry Wood with G15



THE CYPRUS / In Willow

CYPRUS



The Cyprus is a modern take on a classic shape. Featuring a bubble-like beveling, vintage browline and a custom Mountain filagree core wire. 100% UV Protection.



BLACK
2152-47-BK/GRY



CHERRY WOOD
2152-47-CHW/G15



WILLOW
2152-47-WIL/GRN



THE GILBERT / In Cyprus Fade

GILBERT



Gilbert is a timeless silhouette inspired by the effortless style of the 50's. The slightly rounded square frame features our custom Babushka plaque, GLCO Cube filigree core wire and glass lenses. 100% UV Protection.



BLACK
2121-46-BK/PBS



BUTTERSCOTCH
2121-46-BT/PBLU



CYPRUS FADE
2121-46-CYPF/PMP



ESPRESSO
2121-46-ESP/PGN



THE MANZANITA / In Ember Tortoise

MANZANITA



A classic P3 with an uplifted endpiece for a soft, easy wear. Featuring a custom Braid filigree core wire, 5-barrel hinge and a keyhole nose bridge. 100% UV Protection.



BLACK
2151-50-BK/GRN



EMBER TORTOISE
2151-50-EMT/CADG



JUNIPER
2151-50-JUN/GRN



MEADOW



The Meadow Sun is an oversized, 70's inspired frame for a glamorous look. Featuring a stainless steel frame with cured cellulose acetate temple tips and BPA-free adjustable nose pads. 100% UV Protection.



ANTIQUE GOLD-VINTAGE BURNT TORTOISE
4067-56-ATG-VINBRT/BRNTG



GOLD-DOUGLAS FIR
4067-56-G-DGFR/OG



SILVER-BAROLO
4067-56-SV-BAR/WMNG



THE SHERWOOD / In Summer Sun

SHERWOOD



The Sherwood Sun is a compact, tailored square frame taking design notes from classic 50's eyewear. This frame features a thicker acetate, a custom Braid filigree core wire, and our custom Calabar plaque. 100% UV Protection.



BLACK
2154-47-BK/PMP



CHAMPAGNE
2154-47-CH/PBS



LLG
2154-47-LLG/PG15



REDWOOD TORTOISE
2154-47-RWT/PRW



SUMMER SUN
2154-47-SUS/PGN



THE SHERWOOD CLIP / In Silver

SHERWOOD CLIP



ANTIQUE GOLD
5154-44-ATG/O / 5154-47-ATG/O



GOLD
5154-44-G/GRN / 5154-47-G/GRN



SILVER
5154-44-SV/G15 / 5154-47-SV/G15



*Three ways to wear
the versatile Sherwood.
This one feels like a
future classic.*



Optical - True Demi



Clip - Gold with Green



Sun - Summer Sun with Pure Green



THE TORREY / In Black

TORREY



A modern, understated wayfarer designed for a polished look. Featuring a custom Braid filigree core wire, keyhole nose bridge and 100% UV protection.



BLACK
2148-51-BK/G15



CLAY CRYSTAL
2148-51-CLCR/PAC



DOUGLAS FIR
2148-51-DGFR/GRN



PALISADE TORTOISE
2148-51-PAT/LI



THE VAN BUREN II / In Silver-Sea Grey

VAN BUREN II



Our reinvention of the aviator with a single top bar and ultra-modern flat premium glass lenses. Featuring a lightweight metal frame, BPA-free adjustable nose pads and 100% UV protection.



BLACK
4066-49-BK-BK/FPGL5



GOLD-DOUGLAS FIR
4066-49-G-DGFR/FPMP



GOLD-SAP TORTOISE
4066-49-G-SAPT/FPGN



SILVER-SEA GREY
4066-49-SV-SGY/FPBS



METAL SUN

*World¹³⁷ Wilson¹³⁷ Van Burren II¹³⁷
Meadow¹³⁷*

THE VAN BUREN II / In Gold Douglas Fir with Pure Maple



THE VAN BURREN II / In Silver Sea Grey with Pure Blue Smoke



THE WILSON / In Antique Gold-Spotted Brown Shell with Pomagranate



THE MEADOW / In Antique Gold Burnt Tortoise with Brunette Gradient



THE WORLD / In Antique Gold-Spotted Brown Shell with Pomagranate



SUN RECOLORS

Dottie^{/53} *Kinney*^{/55} *Morningside*^{/57}
Wilson^{/59} *World*^{/61}

THE DOTTIE / In Forest with Emerald Green Gradient



THE DOTTIE / In Ember Tortoise

DOTTIE



The Dottie is an updated cat eye taking inspiration from LA's new wave pop-punk scene. Designed with a thick acetate, larger fit, and offered in new, ultra-glam colorways, *the Dottie* is all about attitude.



EMBER TORTOISE
2111-49-EMT/SFBS



FOREST
2111-49-F/SFEMEG



THE KINNEY / In Black

KINNEY



*One of our most recognizable and iconic frames, **Kinney Sun** is an enduring style with balanced proportions suited to fit and flatter both men and women. A defined keyhole bridge lends classic appeal, while soft curves offer wearability to the square-shaped frame.*



BIO DEEP OLIVE
2007-49-BIO DEOLV/SFPG15



BLACK
2007-49-BK/SFPBS



SPOTTED BROWN SHELL
2007-49-SPBRNSH/SFPMP



THE MORNINGSIDE / In Desert Rose

MORNINGSIDE



The Morningside Sun is a new oversized sunglass style inspired by Lauren Hutton's iconic look in *American Gigolo*. The ultra-chic rounded frames come in colorful pastel and classic colorways paired with semi-flat colored lenses.



DESERT ROSE
2076-51-DER/SFBKLIQ



JUNIPER
2076-51-JUN/SFGRN



REDWOOD TORTOISE
2076-51-RWT/SFBRNTG



THE WILSON / In Caramel-Gold

WILSON



The Wilson Sun has reached cult-status and it's no surprise why. Inspired by John Lennon, these metal Windsor rim sunglasses complement a wide range of styles and are available in semi-flat glass, standard base, or pure glass lenses.



BLACK-PEWTER
4003-49-BK-PW/SFPG15



CARAMEL-GOLD
4003-49-C-G/SFPBS



SPOTTED BROWN SHELL-COPPER
4003-49-SPBRNSH-CO/SFPGN



THE WORLD / In Gold-Ember Tortoise

WORLD



*The sleek, square-shaped silhouette of the *World* sunglass belies the utter functionality of its design. With all-metal construction, an intricate coin-edge eyewire pattern, and acetate temple tips, this lightweight frame is crafted for maximum style and comfort.*



ANTIQUE GOLD-SPOTTED BROWN
4052-49-ATG-SPBRNSH/SFPMGT



GOLD-EMBER TORTOISE
4052-49-G-EMT/SFGRN



SILVER-SEA GREY
4052-49-S-SGY/SFBS



UNNATURAL SELECTION

Acetate Cypress trees.
Mountains *frozen in glass*.
Synthetic Nature from the city built
around a *concrete river*.

Los Angeles California



Thank you

For press and VIP inquiries:
Saga Beedy saga@garrettleight.com

