



SS/18

COLLECTION



GARRETT LEIGHT CALIFORNIA OPTICAL

We're always inspired by our travels, by the places we go and people we meet. But why see the world when you got the beach? For our Spring & Summer 2018 Collection we came back home to where the mountains roll into the sea and summer never really ends, with designs born on the beaches, streets, and motels of Playa del Rey, a low key community on the west side of Los Angeles.

For this collection we were inspired by the colored and reflected surfaces of glass, stucco and, steel, developing completely new sun and optical styles with thin metal constructions, all metal temples, detailed acetate beveling, and semi-flat lenses in a rainbow of poppy colors. We pulled from different decades freely — car details from the 1950s, 60s movie stars, metal designs of the 70s, oversized 80s shapes, and 90s acetates — to create retro-influenced and youthful, fashion forward styles perfect for now. And perfect for your vacation, when the sun shines on all of us.

Garrett Leight

**LOS ANGELES
SEPTEMBER 2017**



SS/18

SUN



DEL REY



This women's cat eye influenced by Godard's *Breathless* and wraparound frames features playful star rivets and new acetates with semi-flat CR-39 lenses. And guys can rock it too.



50 BLACK LAMINATE CRYSTAL/SEMI-FLAT G15 2064-50-BKLCY/SFG15
50 BLONDE/SEMI-FLAT GREEN 2064-50-B/SFGRN
50 FEATHER TORTOISE/SEMI-FLAT SIENNA 2064-50-FET/SFSI
50 PINK CRYSTAL/SEMI-FLAT LILAC 2064-50-PCY/SFLI

EYE 50 BRIDGE 20 TEMPLE 132



PLAYA



The Playa is a true round women's semi-flat sunglass with metal rims and acetate inserts, featuring new sculpted metal bridge and temple designs.



48 BASALT-GUNMETAL/SEMI-FLAT BLACK 4035-48-BA-GM/SFBK
48 BLONDE-GOLD/SEMI-FLAT SUNRIDGE GRADIENT MIRROR 4035-48-B-G/SFSRDGM
48 PINK CRYSTAL-ROSE GOLD/SEMI-FLAT CHERRY BOMB 4035-48-PCY-RG/SFCHBO
48 WALNUT TORTOISE-GOLD/SEMI-FLAT OLIVE GRADIENT 4035-48-WT-G/SFOG

EYE 48 BRIDGE 24 TEMPLE 145



CONVOY



Convoy is an oversized men's metal sunglass in an early 80s-inspired angular shape with crystal brow bar, paired with semi-flat CR39 lens in vintage and modern colors.



56 BRUSHED GOLD-CHAMPAGNE/SEMI-FLAT WARM BROWN 4040-56-BG-CH/SFWBRN
56 GOLD-HAZEL/SEMI-FLAT G15 4040-56-G-HZL/SFG15
56 GUNMETAL-SLATE GREY/SEMI-FLAT MARINE 4040-56-GM-SLG/SFM

EYE 56 BRIDGE 17 TEMPLE 150



JACQUELINE



A contemporary take on the iconic 90s frames worn by Kurt Cobain, this octagonal sunglass features laminated acetate-in-acetate construction and semi-flat CR-39 lenses.



50 BLACK-DARK TORTOISE/SEMI-FLAT BLACK 2063-50-BK-DKT/SFBK
50 CHERRY/SEMI-FLAT PURPLE 2063-50-CHE/SFPU
50 SILVERSTONE/SEMI-FLAT ULTRA MARINE GRADIENT 2063-50-SVST/SFULMG

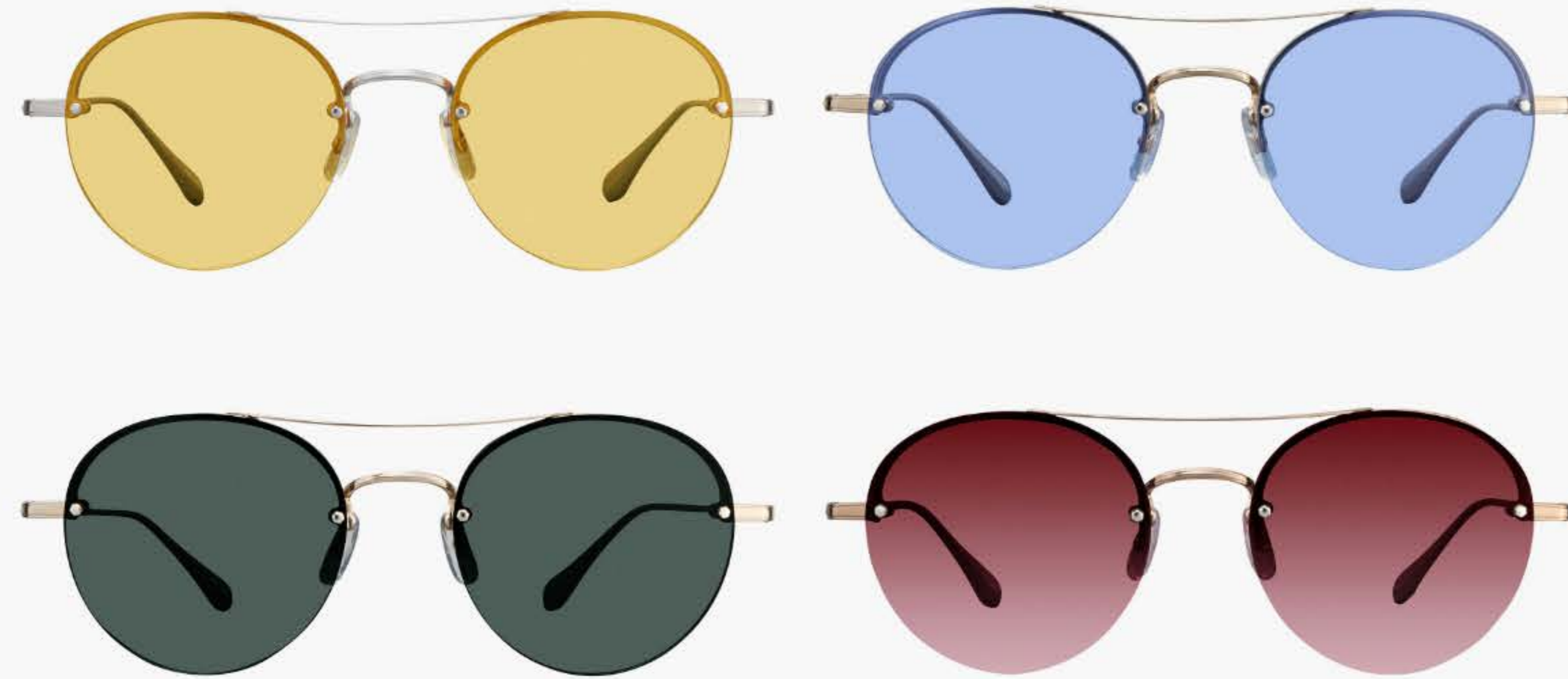
EYE 50 BRIDGE 20 TEMPLE 140



BEAUMONT



Beautiful Beaumont is a large semi-rimless, round sunglass with pop lens colors and fine metal detailing, including riveted hardware and our new ultra thin temples.



53 BRUSHED SILVER-CHAMPAGNE/SHOOTER YELLOW 4041-53-B5-CH/SY
53 GOLD-CRYSTAL/BLUE MAGIC 4041-53-G-CR/BM
53 GOLD-HAZEL/G15 4041-53-G-HZL/G15
53 ROSE GOLD-DOVE/CHERRY BOMB 4041-53-RG-DV/CHBO

EYE 53 BRIDGE 20 TEMPLE 145



CALABAR

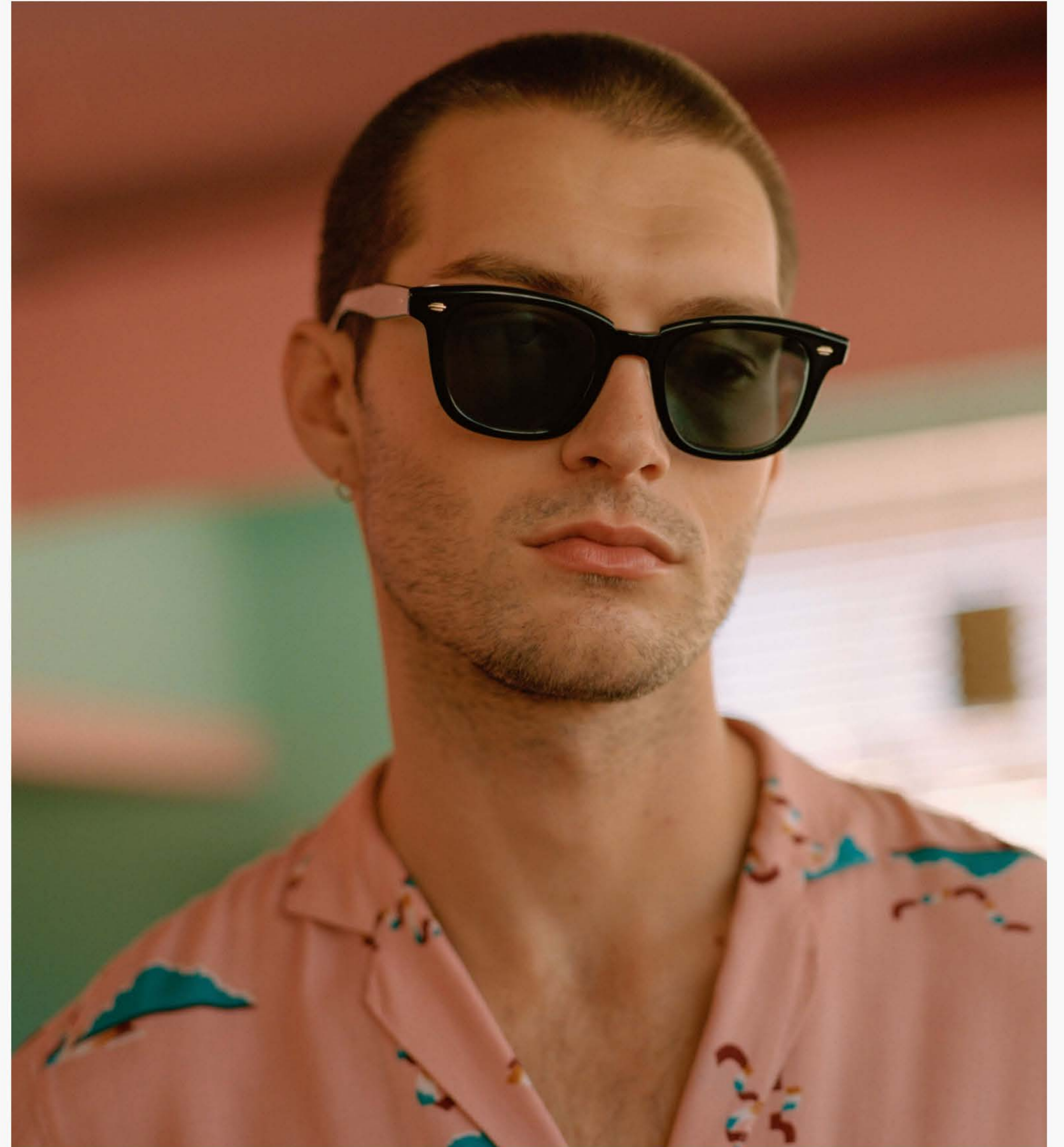


The Calabar is a retro wayfarer silhouette paired with semi-flat lenses, featuring prominent plaques, a distinctive notched temple and a temple design inspired by 50s car fins.



49 BLACK LAMINATE CRYSTAL/SEMI-FLAT BLUESMOKE 2062-49-BKLCY/SFBS
49 CHAMPAGNE/SEMI-FLAT PURE GREEN 2062-49-CH/SFPGN
49 MATTE RUSSET/SEMI-FLAT PURE G15 2062-49-MRST/SFPG15

EYE 49 BRIDGE 23 TEMPLE 145



TUSCANY



Tuscany is a square women's Valencia, an oversized, metal, and minimalist frame with semi-flat CR-39 lenses in pop, vintage, and dark tints.



55 GOLD-DARK HONEY TORTOISE/SEMI-FLAT G15 GOLD FLASH 4034-55-G-DHT/SFG15GF
55 GUNMETAL-BASALT/SEMI-FLAT BLACK 4034-55-GM-BA/SFBK
55 ROSE GOLD-DOVE/SEMI-FLAT CHERRY BOMB 4034-55-RG-DV/SFCHBO

EYE 55 BRIDGE 19 TEMPLE 145



OPTI 2018

MÜNCHEN

DITA

HALL 2 STAND 426

THOM BROWNE.

NEW YORK

HALL 2 STAND 426

Christian Roth

HALL 2 STAND 426

VICTORIA BECKHAM

HALL 2 STAND 400

CUTLER AND GROSS

HALL 2 STAND 409



GARRETT LEIGHT CALIFORNIA OPTICAL

HALL 2 STAND 128



FOR ALL APPOINTMENTS,
EMAIL VANIA@LUXEOPTICLTD.COM

CLUNE



The larger size of our popular optical style, a super round women's frame turned into sun with light and dark pure glass semi-flat lenses.



47 BASALT/SEMI-FLAT GREY BLACK 2047-47-BA/SFGRYBK
47 BLONDE/SEMI-FLAT BLUE SMOKE 2047-47-B/SFBS
47 NUDE/SEMI-FLAT PINK HAZE MIRROR 2047-47-NU/SFPHZM
47 TRUE DEMI/SEMI-FLAT PURE G15 2047-47-TD/SFPG15

EYE 47 BRIDGE 22 TEMPLE 145



WILSON M SHIELD CLIP



A new folding side shield clip accessory in an array of tactile leather textures for last year's colorways of our popular Wilson Metal sun style.



49 BLACK LEATHER-BLACK 6005-49-BKL-BK
49 DAYDREAM LEATHER-ROSE GOLD 6005-49-DDL-RG
49 GRANITE LEATHER-SILVER 6005-49-GRTL-S
49 JASPER LEATHER-GOLD 6005-49-JAL-G

EYE 49



CLUNE CLIP



Our folding clip in classic metal finishes with in three fun colors for the larger size of our round optical style.



47 GOLD/CHERRY BOMB 5047-47-G/CHBO
47 ROSE GOLD/SUNRISE GRADIENT MIRROR 5047-47-RG/SRGM
47 SILVER/GREEN 5047-47-S/GRN

EYE 47 BRIDGE 22



SS/18
OPTICAL



MANCHESTER



A semi-rimless, round style for men and women in sophisticated metal finishes with acetate wrapped temples and our newly designed bridge.



48 BRUSHED GOLD-FEATHER TORTOISE 3037-48-BG-FET
48 BRUSHED SILVER-GREY CRYSTAL 3037-48-B5-GCR
48 ROSE GOLD-NUDE 3037-48-RG-NU

EYE 48 BRIDGE 20 TEMPLE 145



PERSHING



The butterfly shaped Pershing is a new women's optical style with half rims and a thin, lightweight metal construction in new finishes.



54 AMERICANO-TIRAMISU 3033-54-AME-TI
54 GOLD-FEATHER TORTOISE 3033-54-G-FET
54 ROSE GOLD-DOVE 3033-54-RG-DV

EYE 54 BRIDGE 18 TEMPLE 145



TALBERT



A rectangular men's frame influenced by vintage American styles featuring our new nickel-free tapered temples and acetate-metal combos in subtle masculine pairings.



51 BASALT-PEWTER 3038-51-BA-PW
51 BLACK-GOLD 3038-51-BK-G
51 MOSS TORTOISE-BRUSHED SILVER 3038-51-MST-BS
51 WHISKEY TORTOISE-ANTIQUÉ GOLD 3038-51-WHT-ATG

EYE 51 BRIDGE 20 TEMPLE 145



LOYOLA



Loyola is a gently curving optical style with slight cat eye and a medium, feminine fit in new feather tortoise and tiramisu acetates.



47 BLACK 1061-47-BK
47 FEATHER TORTOISE 1061-47-FET
47 NUDE 1061-47-NU
47 TIRAMISU 1061-47-TI

EYE 47 BRIDGE 21 TEMPLE 145



VISTA

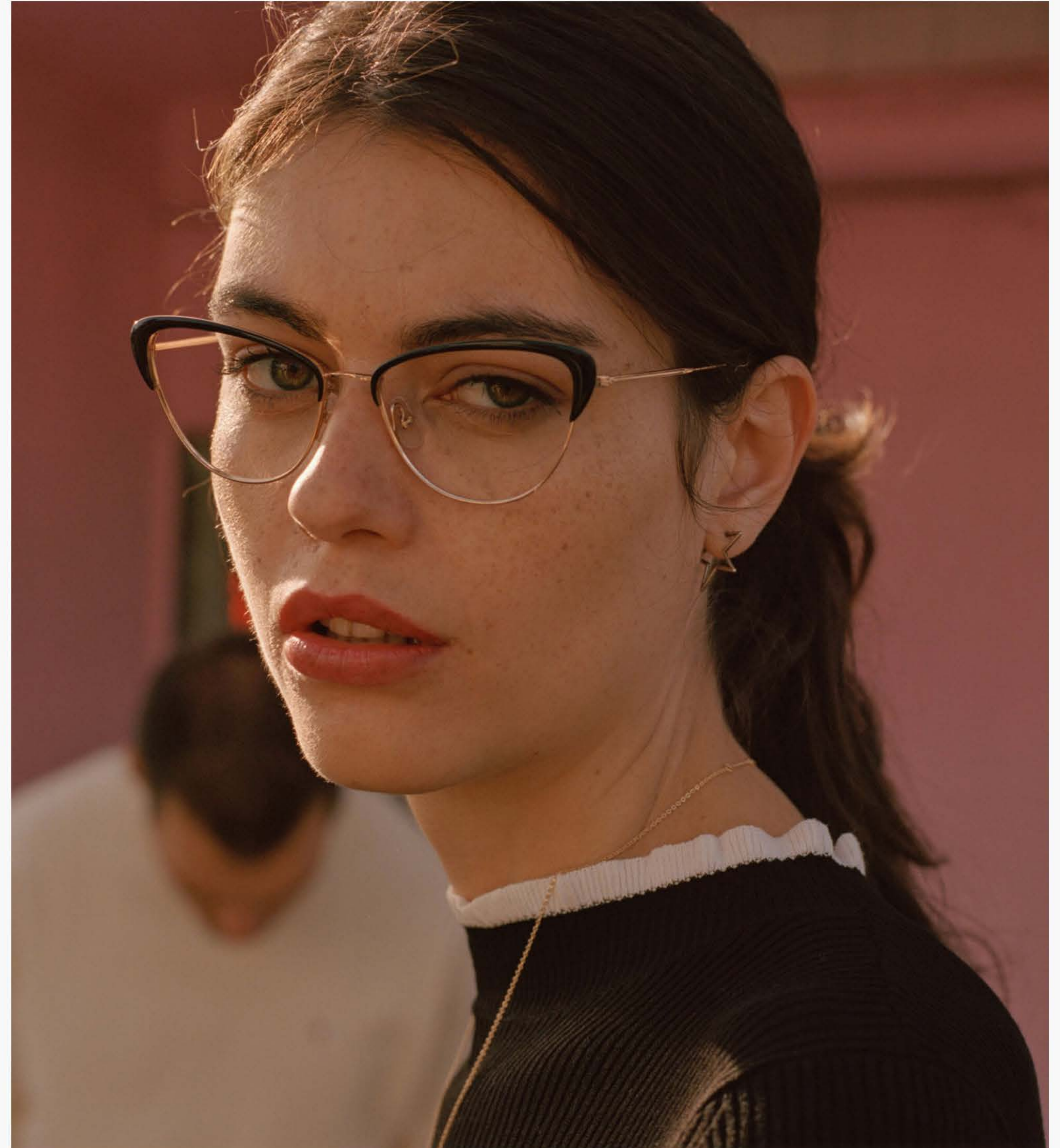


The optical version of our women's sun style in a smaller size with a flared cat eye shape and matching temple tips.



53 GOLD-BLACK 3032-53-G-BK
53 MATTE GOLD-CARAMEL LAMINATE 3032-53-MG-CL
53 ROSE GOLD-PINK BLUSH 3032-53-RG-PBL

EYE 53 BRIDGE 17 TEMPLE 143



CLASSIC STYLES

NEW COLORS



BOON



A newer rectangular style in a smaller size for both men and women reissued with the same timeless acetate options.



48 CHAMPAGNE 1059-48-CH
48 MATTE BLACK LAMINATE CRYSTAL 1059-48-MBKLCY
48 MATTE ESPRESSO 1059-48-MESP
48 MATTE PINEWOOD 1059-48-MPIW

EYE 48 BRIDGE 20 TEMPLE 150

LINNIE



A classic smaller aviator with a coin edge filigree now in two new all-metal finishes with acetate temples in complementary tones.



51 PEARL BEIGE-MATTE GOLD 3020-51-PLBGE-MG
51 SILVER-GREY CRYSTAL 3020-51-SV-GCR

EYE 51 BRIDGE 19/18 TEMPLE 145

BENTLEY



Our popular men's style with a larger size but balanced proportions rereleased in two understated, bestselling acetates.



51 BOTTLE GLASS BROWN 1036-51-BGB
51 CHAMPAGNE 1036-51-CH
51 MATTE GREY CRYSTAL 1036-51-MGCR

KINNEY



Our bestselling acetate frame reissued in a minimalist champagne acetate in two sizes for men and women.



47 / 49 CHAMPAGNE 1007-47-CH / 1007-49-CH

EYE 47/49 BRIDGE 22 TEMPLE 145



SS/18

COLLECTION